



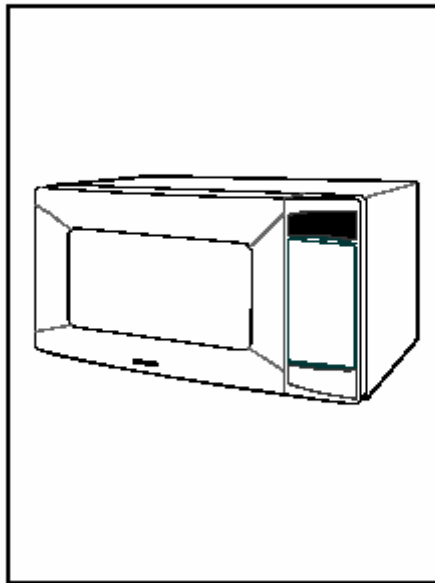
MICROWAVE OVEN

Service Tip # ASC20031017002

Procedure for replacing Control Panel Touch Pad Membrane

Over the Range Models

MICROWAVE OVEN



SEA

This procedure is for the following Over the Range Models:

MR6698WB
MR6699SB

MR6699GB

CAUTION: Disconnect AC Power for this procedure! Failure to do so may result in injury or death! Adhere to the Safety Precautions outlined in the Service Manual. Do not apply power to the unit while performing this repair. High Voltage is present at the High Voltage Capacitor. Wait 30 seconds before removing the cabinet cover from the Microwave Chassis. This will provide sufficient time for the Capacitor to discharge. See Special High Voltage Precautions in the Service Manual for more information.

Special Tools required:

- #2 Phillips head screwdriver or tip.
- Heat Gun or hair dryer.

PROCEDURE:

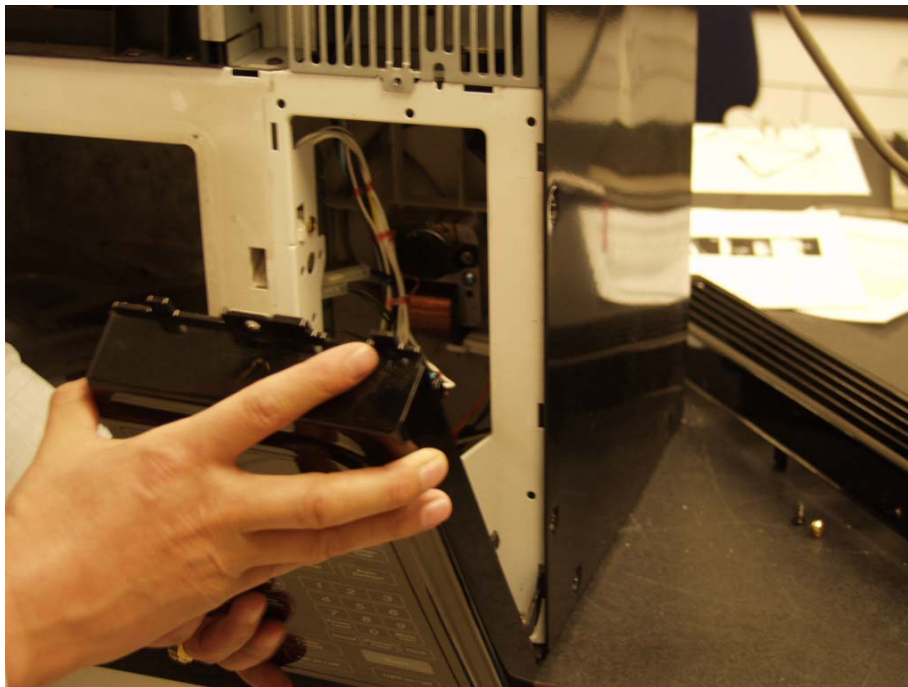
1. Remove two Phillips head screws from the top grill.



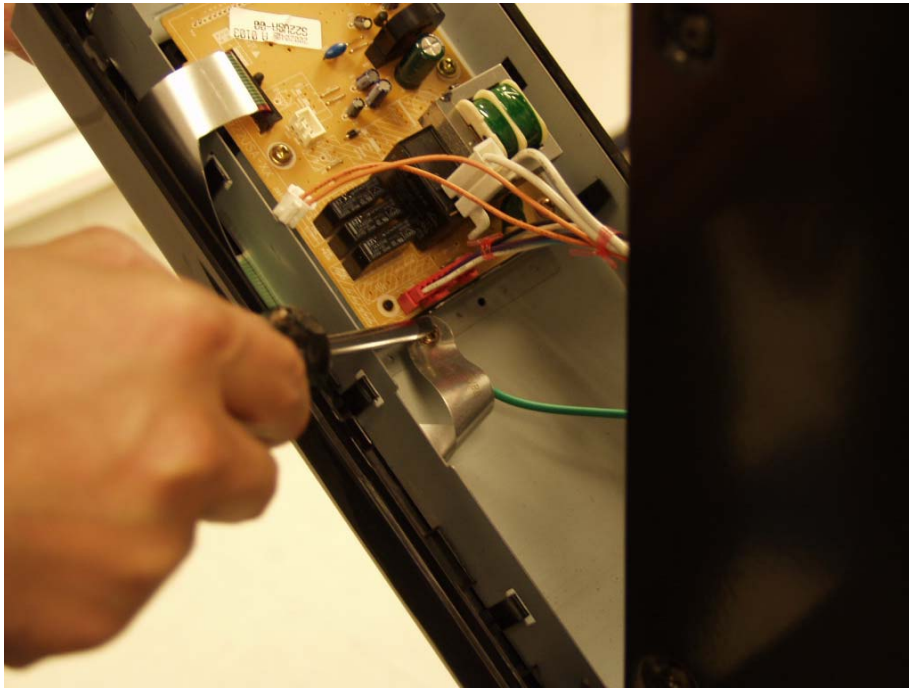
2. Remove one Phillips head screw securing the top of the Control Panel to the Oven.



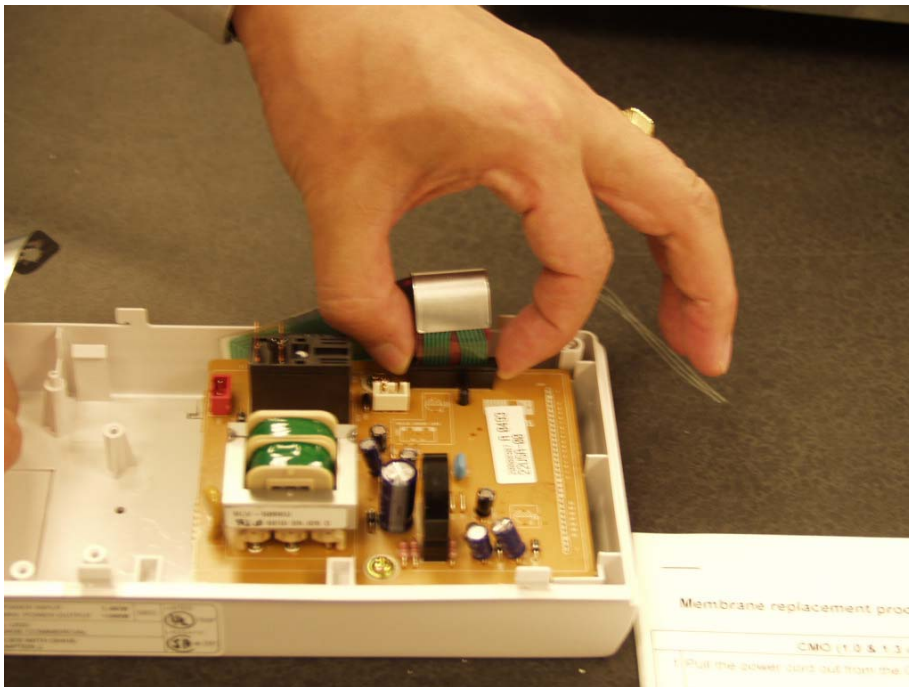
3. Lift and remove the Control Panel from the Oven.



4. Remove Phillips head screw securing green ground wire to Control Panel.



5. Separate all connectors from the Printed Circuit Board.
6. Remove ribbon cable. The cable is locked in the connector. To remove, lift up on the top of the connector to release the lock. The ribbon cable can be removed without difficulty.



WARNING: Be sure to check for and/or remove the thin protective plastic covering, usually on brand new models, before proceeding. This thin protective sheet of plastic must be removed before proceeding.



NOTE: There are two layers to the Membrane assembly. The top layer is the Touch Pad and the lower layer is the Membrane circuit. The cleanest removal of the membrane assembly is best done in two steps.

7. Using a heat source such as a hair dryer or heat gun, apply a medium heat to the entire membrane surface for approximately 30 seconds. Do not use excessive heat! Excessive heat will permanently damage the Control Panel escutcheon. A warm setting is all that is required. To facilitate removal of the top membrane surface after the application of heat, use a blunt tool such as a spatula to lift the edge of one corner of the membrane.



8. Continue to peel up the touch pad membrane until it is completely removed.



9. Reapply heat to the lower membrane circuit for approximately 30 seconds. A warm setting is all that is necessary.



10. Continue to peel the Membrane circuit from the surface of the Control Panel until it is completely removed.

NOTE: A mild warping of the Control Panel surface is expected from the heat. As the panel cools, it will return to its original flat surface.



11. The Control Panel must be free of any traces of adhesive residue in order to function properly. If there is any adhesive residue remaining on the Control Panel escutcheon:
- Reapply heat to any remaining adhesive residue. Then, by using the sticky side of the old membrane, press the membrane against the warmed adhesive. As the old membrane is pulled away, it should remove the residue with it.
 - Do not use alcohol or similar solvents, these could distort or damage the surface of the Control Panel.



IMPORTANT: the Control Panel surface **MUST** be free of any residue or the touch pad may not function properly

Keep the following in mind during the repair:

- The Membrane key board is attached to the Control Panel surface with double faced adhesive. Therefore, applying hot air such as using a hair dryer is recommended for smoother and cleaner removal.
- Reapply heat to any remaining adhesive residue on the Control Panel escutcheon. Then, by using the sticky side of the old membrane, press the membrane against the warmed adhesive. As the old membrane is pulled away, it should remove the residue with it.
- The Control Panel must be free of any traces of adhesive residue in order to function properly.
- Do not use alcohol or similar solvents, these could distort or damage the surface of the Control Panel.
- Do not use a scraper! Using a scraper will damage the plastic surface of the Control Panel which will result in a poor or nonfunctioning Membrane Touch Pad.

NOTE: The easiest way to determine the new Membrane from the old is the following:

Look at the lower right hand section of the Touch Pad, if there is no model number printed there, you have the new Membrane. If a model number is printed in the lower right hand section of the Touch Pad, it is the old Membrane.

NOTE: When reinstalling the Membrane, be sure to feed the flexible circuit through the opening in the control panel cover before affixing the membrane. Once the flexible circuit is through the opening in the cover, peel the adhesive backing and carefully position the new membrane.

12. Reassembly Procedure: Reverse the disassembly procedure

13. Test Microwave Oven for operation and functionality. Apply AC power to unit. A simple test using a small cup of water will verify operation. Insert the cup of water in the Oven and activate a heat cycle. Check to see that it has warmed.

The following table shows a comparison of the old Membrane to the new Membrane part number.

MODEL	AS-IS (One Tail) CODE NO	TO-BE (Two Tail) CODE NO
MR6699SB	DE34-00049C	DE34-00049F
MR6699GB	DE34-00049B	DE34-00049E
MR6698WB	DE34-00049A	DE34-00049D